



**AMIT ACADEMY**  
for Computer Education

**Subject – Desktop Application  
Development (VB.NET)**

**Intermediate Tools for Desktop  
application Development**

**AMIT ACADEMY FOR COMPUTER EDUCATION  
Nr Vardayini Mataji Temple, Rupal,  
Gandhinagar-382630**

**Email – [amitacademy1117@gmail.com](mailto:amitacademy1117@gmail.com)**

**Mobile No – 8460467193**

**YouTube Link –**

**<https://www.youtube.com/@ankitramijoinar>**

**Instagram Link –**

**<https://www.instagram.com/amitacademy17/>**

**Facebook Link –**

**<https://www.facebook.com/aramitacademy/>**

**Design and Develop by Assistant Professor Ankit Rami**

**Any Query Contact - 8460467193**

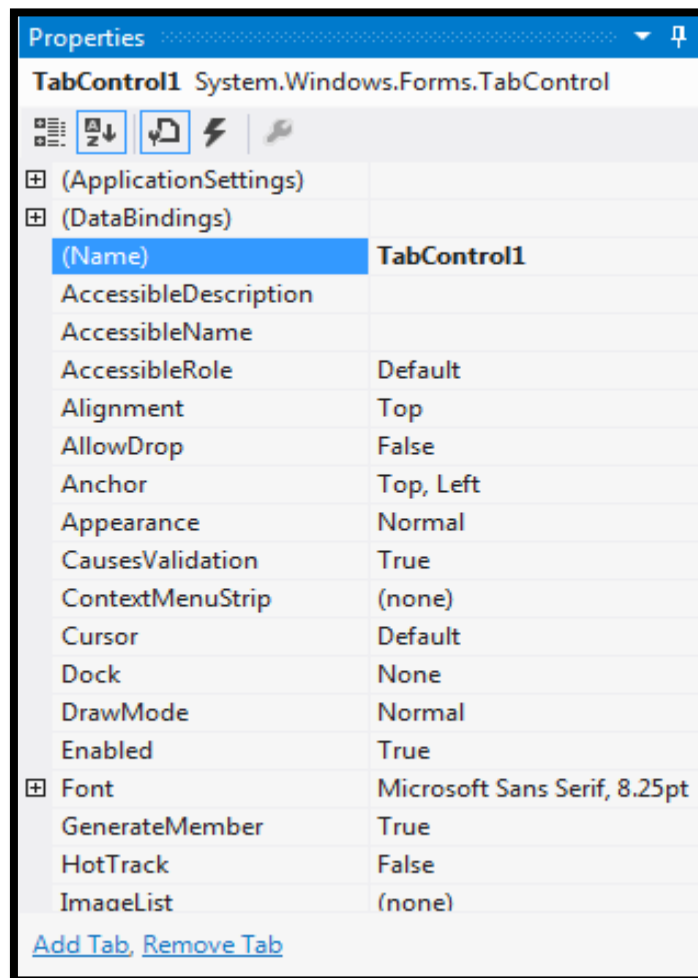


## ⇒ Tab Control Tool in VB.net

The Tab Control is a container control that allows you to display multiple tabs on a single form and it allowed switching between the tabs.

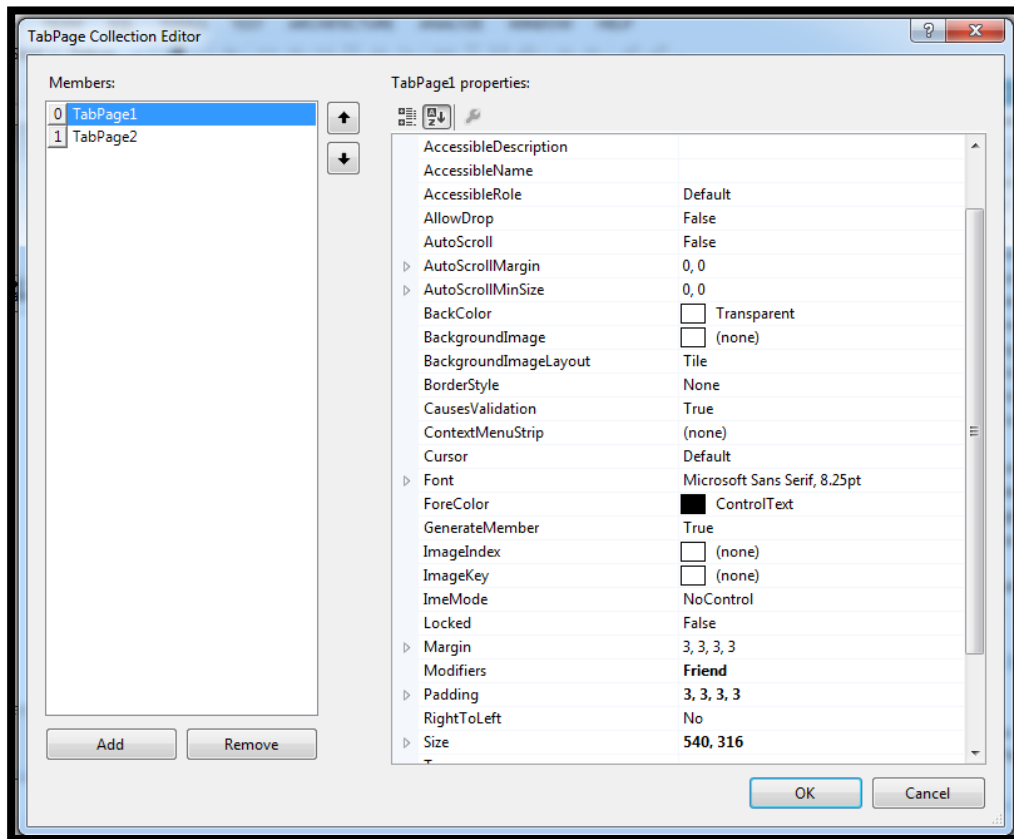
The Windows Forms Tab Control displays multiple tabs, like dividers in a notebook or labels in a set of folders in a filing cabinet. The tabs can contain pictures and other controls..

## VB.NET Tab Control Properties





## Manage Tab Control Dialog in VB.net



## Tab Control Events in VB.net

1. OnContextMenuClick
  - Occurs when an option on the context menu is clicked.
2. MouseEnter
  - Occurs when the mouse device enters that element field.
3. MouseLeave
  - Occurs when the mouse device leaves that element field.
4. OnMouseClicked
  - Occurs when the element is clicked.



## 5. GotFocus

- Occurs when the focus is on the current element.

## 6. LostFocus

- Occurs when the focus moves out of the current element.

## Tab Control Methods in VB.net

### 1. Enable

- Gets or sets a value indicating whether the element can respond to user interaction.
- If true, the element is enabled
- If false, the element is not enabled.

### 2. GetNativeProperty

- Gets the value of the built-in property of the current element.

### 3. InvokeNativeMethod

- Invokes the built-in method of the current element.

### 4. SelectTabByIndex

- Selects the tab with a specific index.

### 5. SelectTabByName

- Selects the tab with a specific name.

### 6. SetContextMenu

- Sets the context menu for the UI element. It accepts the input in either a string array or a comma-separated string.

### 7. SetNativeProperty

- Sets the value of the built-in property of the current element.



## 8. SetTabState

- Enables or deactivates the tab.

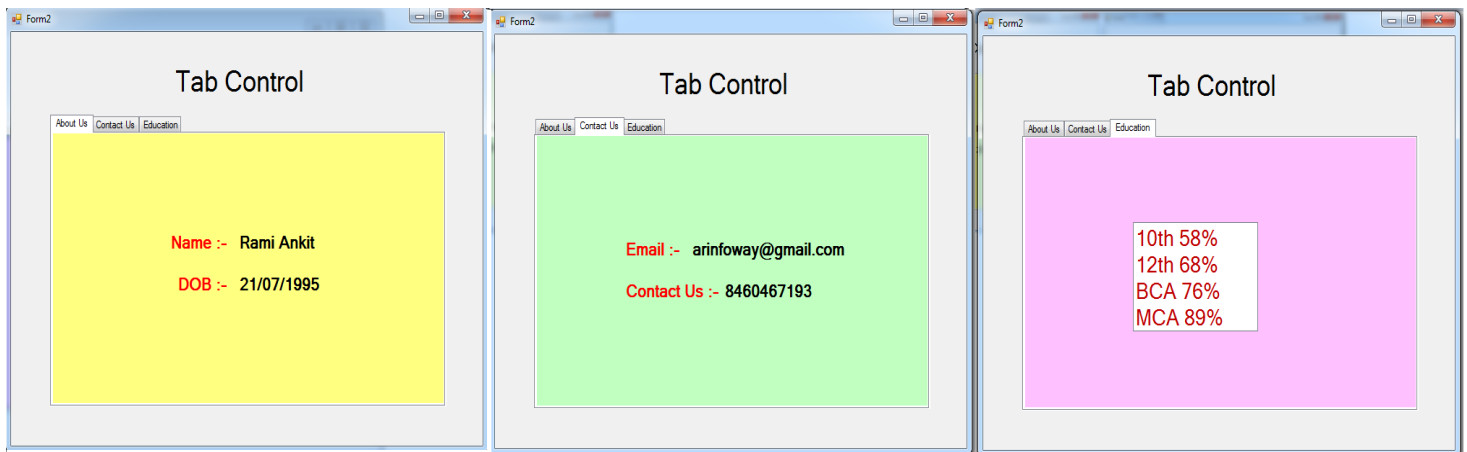
## 9. SetTabVisibility

- Gets or sets a value that indicates whether the tab and all its child elements are displayed.

## 10. SetVisibility

- Gets or sets a value that indicates whether the current element and all its child elements are displayed.
- If true, the current element and all its child elements are displayed.
- If false, the current element and all its child elements aren't displayed.

## Ex- Tab Control





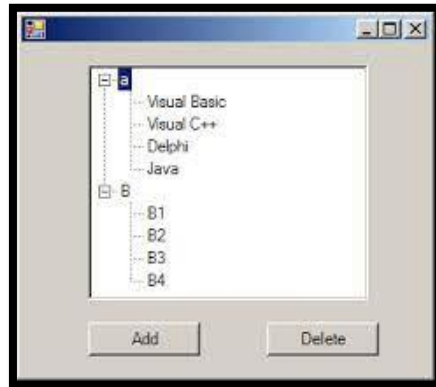
## Data Items Managing Tools

- These are tools that can be used to select data from a specific list called data selection tools.
- **Tree View**
  - The TreeView control is used to display hierarchical representations of items similar to the ways the files and folders are displayed in the left pane of the Windows Explorer. Each node may contain one or more child nodes.
- **List View**
  - The ListView control is used to display a list of items. Along with the TreeView control, it allows you to create a Windows Explorer like interface.



## ⇒ Tree View Control in VB.net

- The TreeView control is used to display hierarchical representations of items similar to the ways the files and folders are displayed in the left pane of the Windows Explorer. Each node may contain one or more child nodes.



## Tree View Control Properties in VB.net

Sr.No.	Property & Description
1	<b>BackColor</b> Gets or sets the background color for the control.
2	<b>BackgroundImage</b> Gets or set the background image for the TreeView control.
3	<b>BackgroundImageLayout</b> Gets or sets the layout of the background image for the TreeView control.
4	<b>BorderStyle</b> Gets or sets the border style of the tree view control.
5	<b>CheckBoxes</b> Gets or sets a value indicating whether check boxes are displayed next to the tree nodes in the tree view control.
6	<b>DataBindings</b> Gets the data bindings for the control.
7	<b>Font</b> Gets or sets the font of the text displayed by the control.
8	<b>FontHeight</b> Gets or sets the height of the font of the control.
9	<b>ForeColor</b> The current foreground color for this control, which is the color the control uses to draw its text.
10	<b>ItemHeight</b> Gets or sets the height of each tree node in the tree view control.
11	<b>Nodes</b> Gets the collection of tree nodes that are assigned to the tree view control.
12	<b>PathSeparator</b> Gets or sets the delimiter string that the tree node path uses.
13	<b>RightToLeftLayout</b> Gets or sets a value that indicates whether the TreeView should be laid out from right-to-left.
14	<b>Scrollable</b> Gets or sets a value indicating whether the tree view control displays scroll bars when they are needed.
15	<b>SelectedImageIndex</b> Gets or sets the image list index value of the image that is displayed when a tree node is selected.
16	<b>SelectedImageKey</b> Gets or sets the key of the default image shown when a TreeNode is in a selected state.
17	<b>SelectedNode</b> Gets or sets the tree node that is currently selected in the tree view control.
18	<b>ShowLines</b> Gets or sets a value indicating whether lines are drawn between tree nodes in the tree view control.
19	<b>ShowNodeToolTips</b> Gets or sets a value indicating ToolTips are shown when the mouse pointer hovers over a TreeNode.
20	<b>ShowPlusMinus</b> Gets or sets a value indicating whether plus-sign (+) and minus-sign (-) buttons are displayed next to tree nodes that contain child tree nodes.
21	<b>ShowRootLines</b> Gets or sets a value indicating whether lines are drawn between the tree nodes that are at the root of the tree view.
22	<b>Sorted</b> Gets or sets a value indicating whether the tree nodes in the tree view are sorted.
23	<b>StateImageList</b> Gets or sets the image list that is used to indicate the state of the TreeView and its nodes.
24	<b>Text</b> Gets or sets the text of the TreeView.
25	<b>TopNode</b> Gets or sets the first fully-visible tree node in the tree view control.
26	<b>TreeViewNodeSorter</b> Gets or sets the implementation of IComparer to perform a custom sort of the TreeView nodes.
27	<b>VisibleCount</b> Gets the number of tree nodes that can be fully visible in the tree view control.

Design and Develop by Assistant Professor Ankit Rami

Any Query Contact - 8460467193



## Tree View Control Methods in VB.net

Sr.No.	Method Name & Description
1	<b>CollapseAll</b> Collapses all the nodes including all child nodes in the tree view control.
2	<b>ExpandAll</b> Expands all the nodes.
3	<b>GetNodeAt</b> Gets the node at the specified location.
4	<b>GetNodeCount</b> Gets the number of tree nodes.
5	<b>Sort</b> Sorts all the items in the tree view control.
6	<b>ToString</b> Returns a string containing the name of the control.

## Tree View Control Events in VB.net

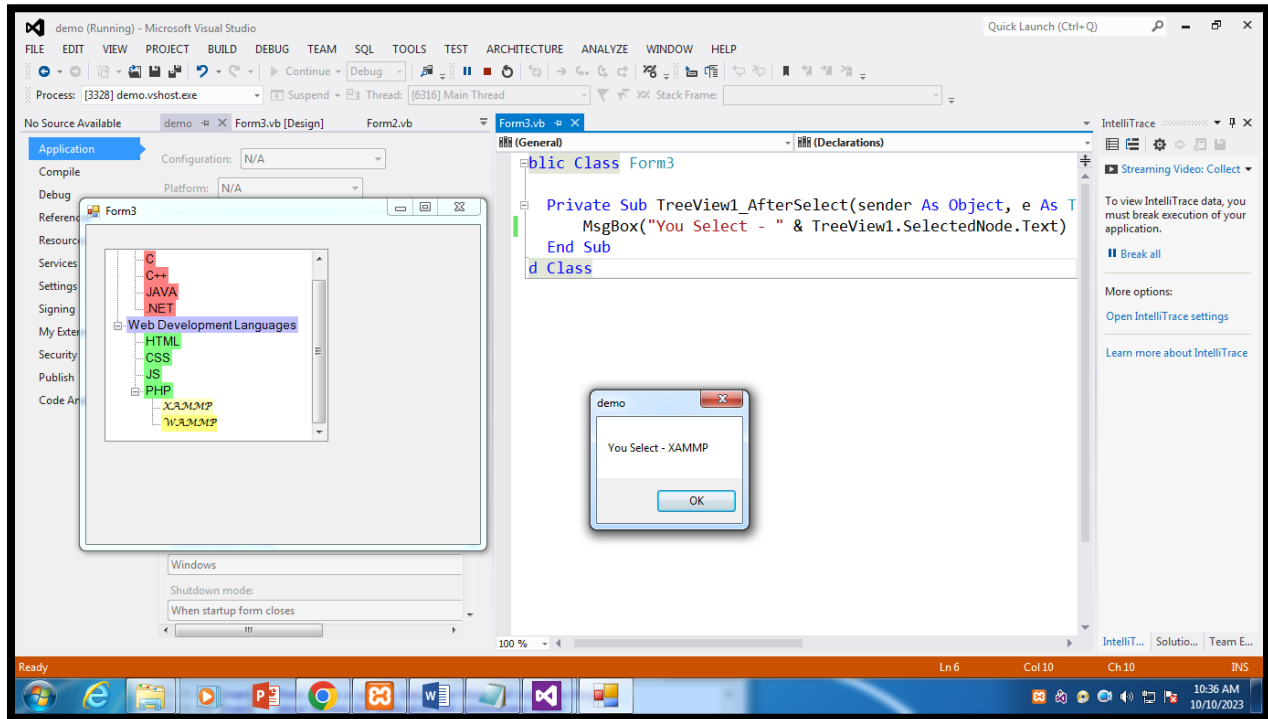
Sr.No.	Event & Description
1	<b>AfterCheck</b> Occurs after the tree node check box is checked.
2	<b>AfterCollapse</b> Occurs after the tree node is collapsed.
3	<b>AfterExpand</b> Occurs after the tree node is expanded.
4	<b>AfterSelect</b> Occurs after the tree node is selected.
5	<b>BeforeCheck</b> Occurs before the tree node check box is checked.
6	<b>BeforeCollapse</b> Occurs before the tree node is collapsed.
7	<b>BeforeExpand</b> Occurs before the tree node is expanded.
8	<b>BeforeLabelEdit</b> Occurs before the tree node label text is edited.
9	<b>BeforeSelect</b> Occurs before the tree node is selected.
10	<b>ItemDrag</b> Occurs when the user begins dragging a node.

11	<b>NodeMouseClicked</b> Occurs when the user clicks a TreeNode with the mouse.
12	<b>NodeMouseDoubleClick</b> Occurs when the user double-clicks a TreeNode with the mouse.
13	<b>NodeMouseHover</b> Occurs when the mouse hovers over a TreeNode.
14	<b>PaddingChanged</b> Occurs when the value of the Padding property changes.
15	<b>Paint</b> Occurs when the TreeView is drawn.
16	<b>RightToLeftLayoutChanged</b> Occurs when the value of the RightToLeftLayout property changes.
17	<b>TextChanged</b> Occurs when the Text property changes.



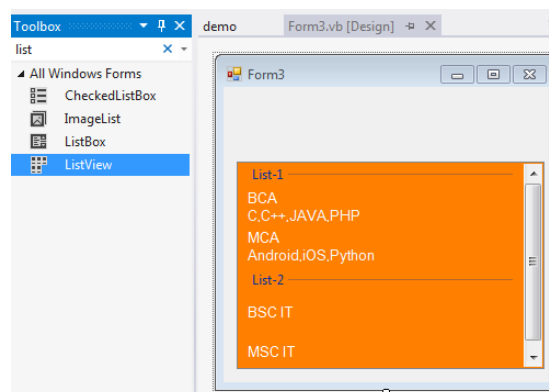


## Ex- ComboBox Control



## ⇒ List View Control in VB.net

- The ListView control is used to display a list of items. Along with the TreeView control, it allows you to create a Windows Explorer like interface.
- The ListView control displays a list of items along with icons. The Item property of the ListView control allows you to add and remove items from it. The SelectedItem property contains a collection of the selected items. The MultiSelect property allows you to set select more than one item in the list view.



**Design and Develop by Assistant Professor Ankit Rami**

**Any Query Contact - 8460467193**



## List View Control Properties in VB.net

Sr.No	Property & Description
1	<b>Alignment</b> Gets or sets the alignment of items in the control.
2	<b>AutoArrange</b> Gets or sets whether icons are automatically kept arranged.
3	<b>BackColor</b> Gets or sets the background color.
4	<b>CheckBoxes</b> Gets or sets a value indicating whether a check box appears next to each item in the control.
5	<b>CheckedIndices</b> Gets the indexes of the currently checked items in the control.
6	<b>CheckedItems</b> Gets the currently checked items in the control.
7	<b>Columns</b> Gets the collection of all column headers that appear in the control.
8	<b>GridLines</b> Gets or sets a value indicating whether grid lines appear between the rows and columns containing the items and subitems in the control.
9	<b>HeaderStyle</b> Gets or sets the column header style.
10	<b>HideSelection</b> Gets or sets a value indicating whether the selected item in the control remains highlighted when the control loses focus.
11	<b>HotTracking</b> Gets or sets a value indicating whether the text of an item or subitem has the appearance of a hyperlink when the mouse pointer passes over it.
12	<b>HoverSelection</b> Gets or sets a value indicating whether an item is automatically selected when the mouse pointer remains over the item for a few seconds.
13	<b>InsertionMark</b> Gets an object used to indicate the expected drop location when an item is dragged within a ListView control.
14	<b>Items</b> Gets a collection containing all items in the control.
15	<b>LabelWrap</b> Gets or sets a value indicating whether item labels wrap when items are displayed in the control as icons.
16	<b>LargeImageList</b> Gets or sets the ImageList to use when displaying items as large icons in the control.
17	<b>MultiSelect</b> Gets or sets a value indicating whether multiple items can be selected.
18	<b>RightToLeftLayout</b> Gets or sets a value indicating whether the control is laid out from right to left.
19	<b>Scrollable</b> Gets or sets a value indicating whether a scroll bar is added to the control when there is not enough room to display all items.
20	<b>SelectedIndices</b> Gets the indexes of the selected items in the control.
21	<b>SelectedItems</b> Gets the items that are selected in the control.
22	<b>ShowGroups</b> Gets or sets a value indicating whether items are displayed in groups.
23	<b>ShowItemToolTips</b> Gets or sets a value indicating whether ToolTips are shown for the ListViewItem objects contained in the ListView.
24	<b>SmallImageList</b> Gets or sets the ImageList to use when displaying items as small icons in the control.
25	<b>Sorting</b> Gets or sets the sort order for items in the control.
26	<b>StateImageList</b> Gets or sets the ImageList associated with application-defined states in the control.
27	<b>TopItem</b> Gets or sets the first visible item in the control.
28	<b>View</b> Gets or sets how items are displayed in the control. This property has the following values: <ul style="list-style-type: none"><li>● LargeIcon – displays large items with a large 32 x 32 pixels icon.</li><li>● SmallIcon – displays items with a small 16 x 16 pixels icon</li><li>● List – displays small icons always in one column</li><li>● Details – displays items in multiple columns with column headers and fields</li><li>● Tile – displays items as full-size icons with item labels and sub-item information.</li></ul>
29	<b>VirtualListSize</b> Gets or sets the number of ListViewItem objects contained in the list when in virtual mode.
30	<b>VirtualMode</b> Gets or sets a value indicating whether you have provided your own data-management operations for the ListView control.



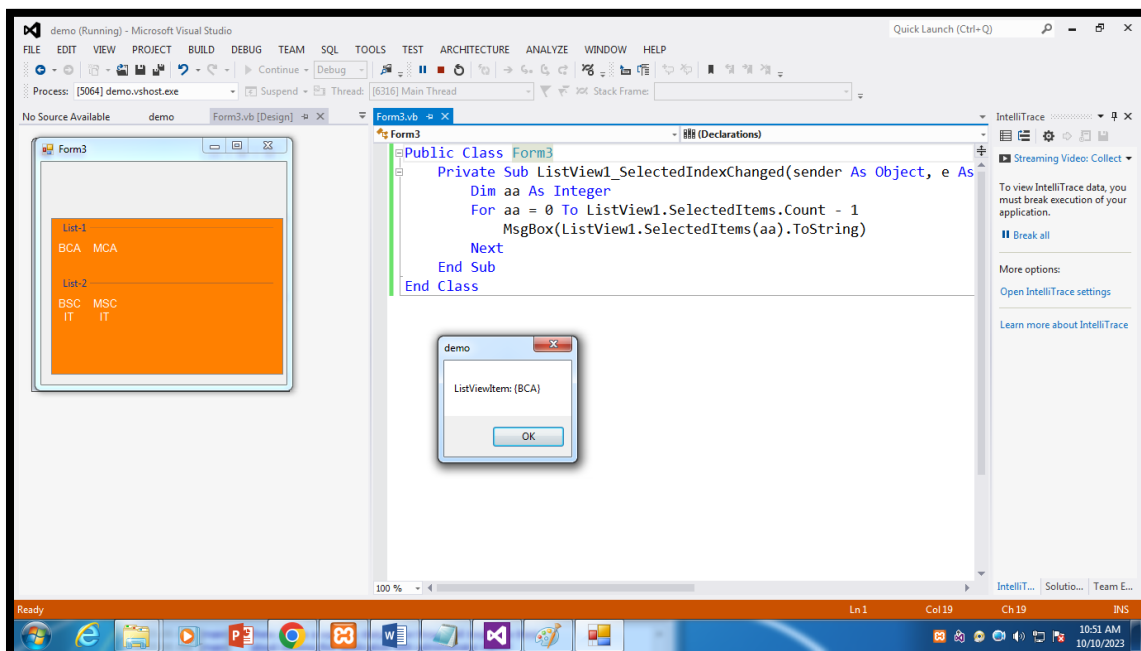
## List View Control Method in VB.net

Sr.No.	Method Name & Description
1	<b>Clear</b> Removes all items from the ListView control.
1	<b>ToString</b> Returns a string containing the string representation of the control.

## List View Control Events in VB.Net

Sr.No.	Event & Description
1	<b>ColumnClick</b> Occurs when a column header is clicked.
2	<b>ItemCheck</b> Occurs when an item in the control is checked or unchecked.
3	<b>SelectedIndexChanged</b> Occurs when the selected index is changed.
4	<b>TextChanged</b> Occurs when the Text property is changed.

## Ex- List View Control



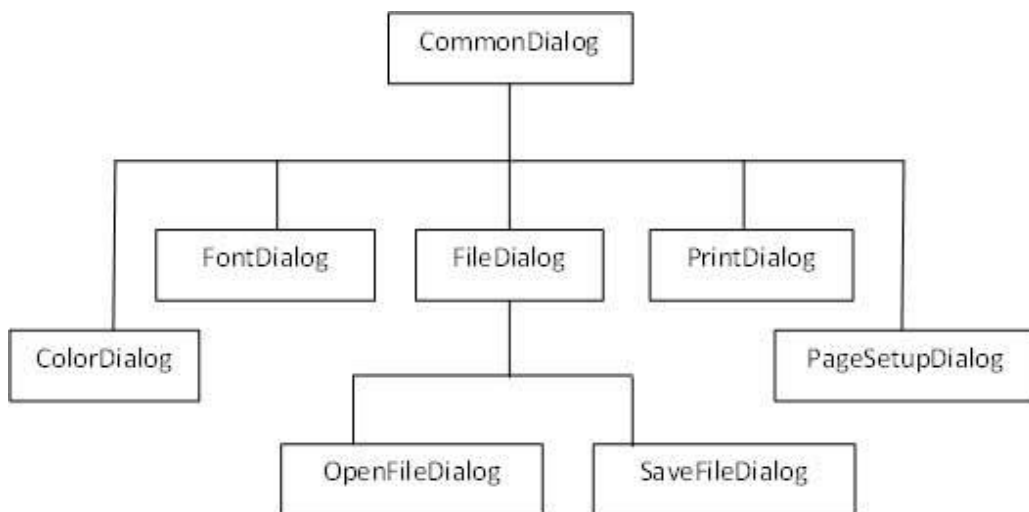
**Design and Develop by Assistant Professor Ankit Rami**

**Any Query Contact - 8460467193**



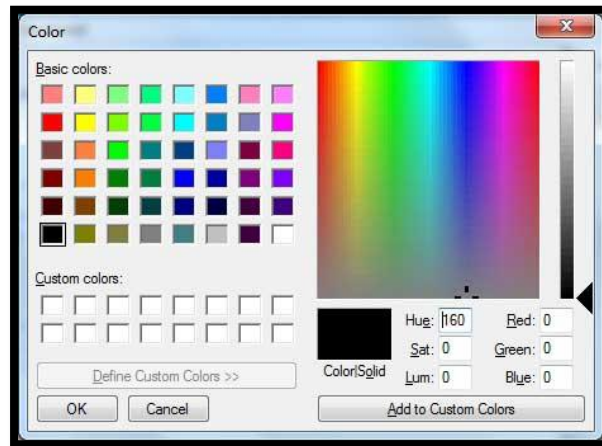
## Dialog Box Base Tools

- These are tools used to view pictures, give a notice or instruction, and scroll or Track data.
- **Open Dialog Box**
  - It is used to display Open File Dialog Box.
- **Save Dialog Box**
  - It is used to display Save Dialog Box.
- **Font Dialog Box**
  - It is used to display Font Dialog Box.
- **Color Dialog Box**
  - It is used to display Color Dialog Box.
- **Print Dialog Box**
  - It is used to display Print Dialog Box.



## Color Dialog in VB.net

- The Color Dialog control class represents a common dialog box that displays available colors along with controls that enable the user to define custom colors. It lets the user select a color.
- The main property of the Color Dialog control is Color, which returns a Color object.



## Color Dialog Box Properties in VB.net

Sr.No.	Property & Description
1	<b>AllowFullOpen</b> Gets or sets a value indicating whether the user can use the dialog box to define custom colors.
2	<b>AnyColor</b> Gets or sets a value indicating whether the dialog box displays all available colors in the set of basic colors.
3	<b>CanRaiseEvents</b> Gets a value indicating whether the component can raise an event.
4	<b>Color</b> Gets or sets the color selected by the user.
5	<b>CustomColors</b> Gets or sets the set of custom colors shown in the dialog box.
6	<b>FullOpen</b> Gets or sets a value indicating whether the controls used to create custom colors are visible when the dialog box is opened.
7	<b>ShowHelp</b> Gets or sets a value indicating whether a Help button appears in the color dialog box.
8	<b>SolidColorOnly</b> Gets or sets a value indicating whether the dialog box will restrict users to selecting solid colors only.



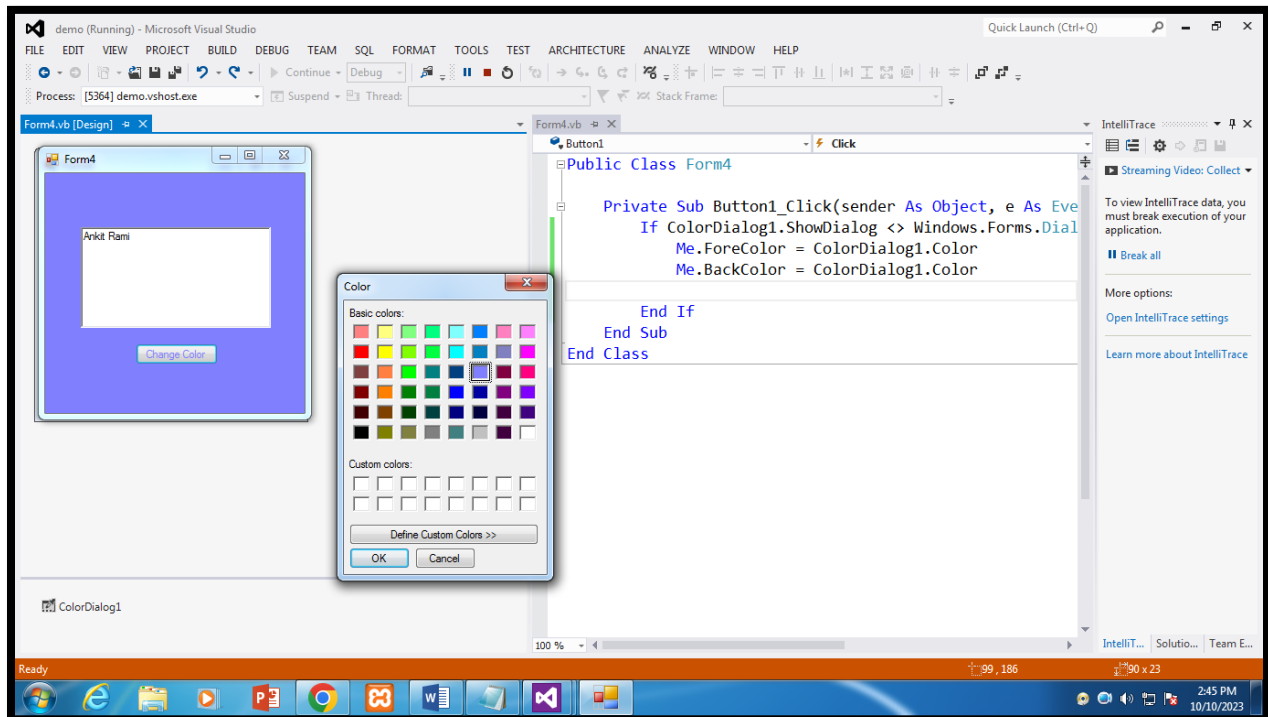
## Color Dialog Box Methods in VB.net

Sr.No.	Method Name & Description
1	<b>Reset</b> Resets all options to their default values, the last selected color to black, and the custom colors to their default values.
2	<b>RunDialog</b> When overridden in a derived class, specifies a common dialog box.
3	<b>ShowDialog</b> Runs a common dialog box with a default owner.

## Color Dialog Box Events in VB.net

Sr.No.	Event & Description
1	<b>HelpRequest</b> Occurs when the user clicks the Help button on a common dialog box.

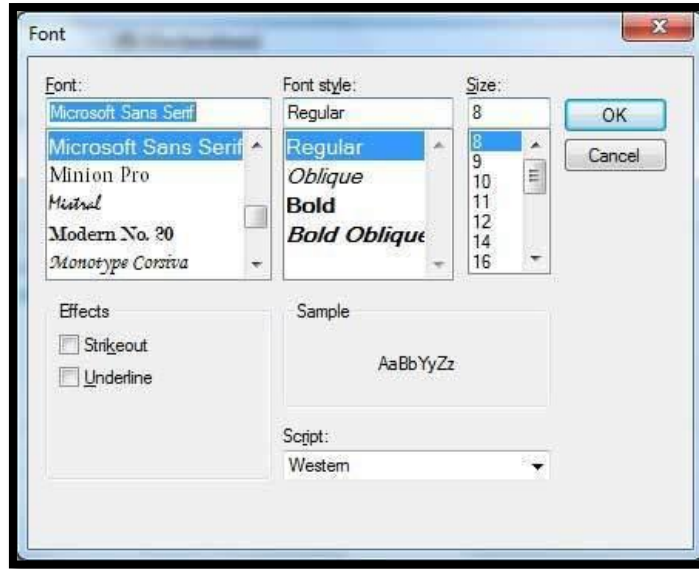
## Ex- Color Dialog Box Control





## Font Dialog Box in VB.net

- It prompts the user to choose a font from among those installed on the local computer and lets the user select the font, font size, and color. It returns the Font and Color objects.



## Font Dialog Box Properties in VB.net

Sr.No.	Property & Description
1	<b>AllowSimulations</b> Gets or sets a value indicating whether the dialog box allows graphics device interface (GDI) font simulations.
2	<b>AllowVectorFonts</b> Gets or sets a value indicating whether the dialog box allows vector font selections.
3	<b>AllowVerticalFonts</b> Gets or sets a value indicating whether the dialog box displays both vertical and horizontal fonts, or only horizontal fonts.
4	<b>Color</b> Gets or sets the selected font color.
5	<b>FixedPitchOnly</b> Gets or sets a value indicating whether the dialog box allows only the selection of fixed-pitch fonts.
6	<b>Font</b> Gets or sets the selected font.
7	<b>FontMustExist</b> Gets or sets a value indicating whether the dialog box specifies an error condition if the user attempts to select a font or style that does not exist.
8	<b>MaxSize</b> Gets or sets the maximum point size a user can select.

9	<b>MinSize</b> Gets or sets the minimum point size a user can select.
10	<b>ScriptsOnly</b> Gets or sets a value indicating whether the dialog box allows selection of fonts for all non-OEM and Symbol character sets, as well as the ANSI character set.
11	<b>ShowApply</b> Gets or sets a value indicating whether the dialog box contains an <b>Apply</b> button.
12	<b>ShowColor</b> Gets or sets a value indicating whether the dialog box displays the color choice.
13	<b>ShowEffects</b> Gets or sets a value indicating whether the dialog box contains controls that allow the user to specify strikethrough, underline, and text color options.
14	<b>ShowHelp</b> Gets or sets a value indicating whether the dialog box displays a Help button.



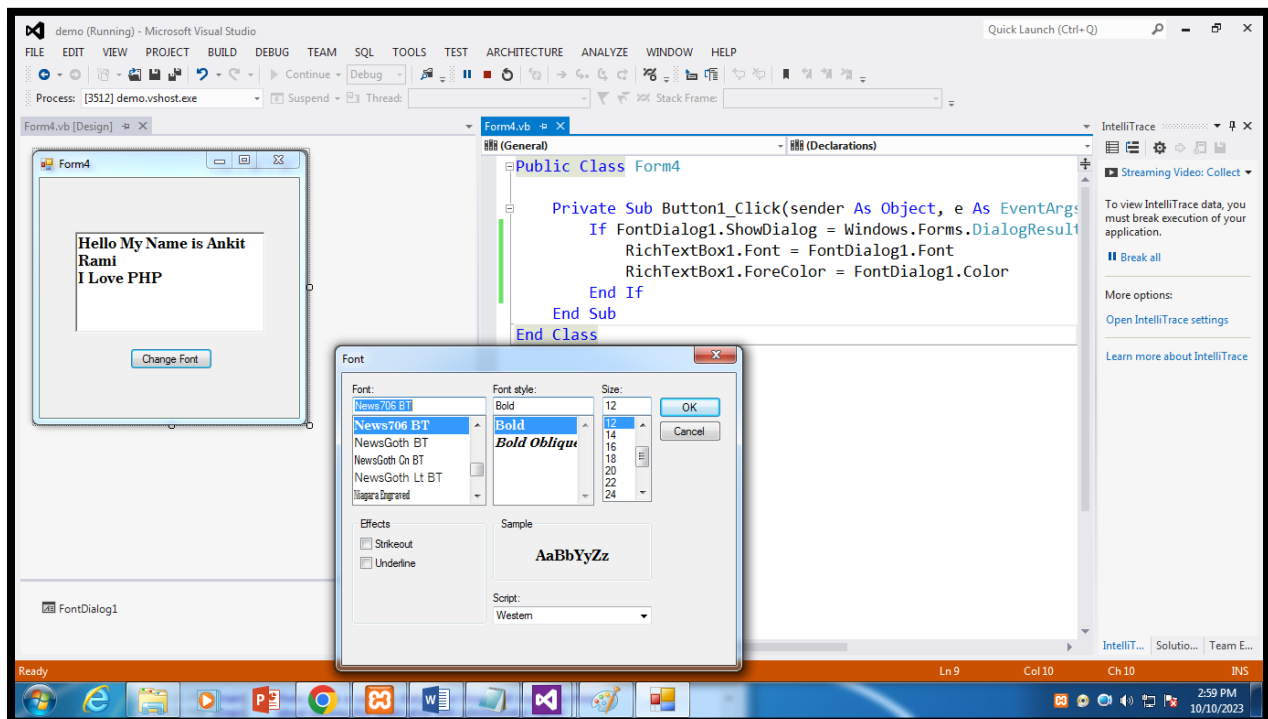
## Font Dialog Box Events in VB.net

Sr.No.	Method Name & Description
1	<b>Reset</b> Resets all options to their default values.
2	<b>RunDialog</b> When overridden in a derived class, specifies a common dialog box.
3	<b>ShowDialog</b> Runs a common dialog box with a default owner.

## Font Dialog Box Methods in VB.net

Sr.No.	Event & Description
1	<b>Apply</b> Occurs when the Apply button on the font dialog box is clicked.

## Ex- Font Dialog Box

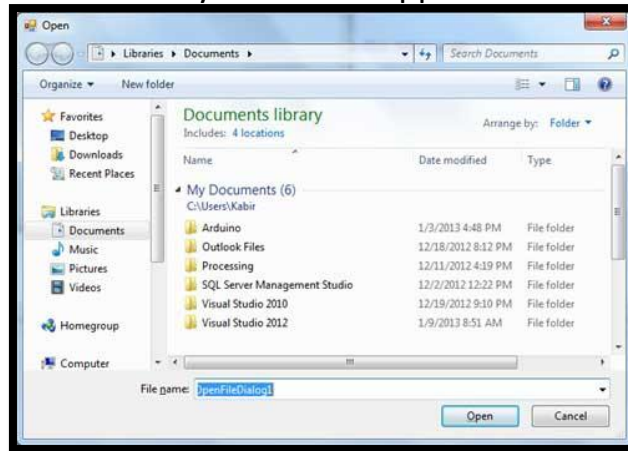






## Open File Dialog in VB.net

- The OpenFileDialog control prompts the user to open a file and allows the user to select a file to open. The user can check if the file exists and then open it. The OpenFileDialog control class inherits from the abstract class FileDialog.
- If the ShowReadOnly property is set to True, then a read-only check box appears in the dialog box. You can also set the ReadOnlyChecked property to True, so that the read-only check box appears checked.



## Open File Dialog Properties in VB.net

Sr.No.	Property & Description
1	<b>AddExtension</b> Gets or sets a value indicating whether the dialog box automatically adds an extension to a file name if the user omits the extension.
2	<b>AutoUpgradeEnabled</b> Gets or sets a value indicating whether this FileDialog instance should automatically upgrade appearance and behavior when running on Windows Vista.
3	<b>CheckFileExists</b> Gets or sets a value indicating whether the dialog box displays a warning if the user specifies a file name that does not exist.
4	<b>CheckPathExists</b> Gets or sets a value indicating whether the dialog box displays a warning if the user specifies a path that does not exist.
5	<b>CustomPlaces</b> Gets the custom places collection for this FileDialog instance.
6	<b>DefaultExt</b> Gets or sets the default file name extension.
7	<b>DereferenceLinks</b> Gets or sets a value indicating whether the dialog box returns the location of the file referenced by the shortcut or whether it returns the location of the shortcut (.lnk).
8	<b>FileName</b> Gets or sets a string containing the file name selected in the file dialog box.
9	<b>FileNames</b> Gets the file names of all selected files in the dialog box.
10	<b>Filter</b> Gets or sets the current file name filter string, which determines the choices that appear in the "Save as file type" or "Files of type" box in the dialog box.
11	<b>FilterIndex</b> Gets or sets the index of the filter currently selected in the file dialog box.

12	<b>InitialDirectory</b> Gets or sets the initial directory displayed by the file dialog box.
13	<b>Multiselect</b> Gets or sets a value indicating whether the dialog box allows multiple files to be selected.
14	<b>ReadOnlyChecked</b> Gets or sets a value indicating whether the read-only check box is selected.
15	<b>RestoreDirectory</b> Gets or sets a value indicating whether the dialog box restores the current directory before closing.
16	<b>SafeFileName</b> Gets the file name and extension for the file selected in the dialog box. The file name does not include the path.
17	<b>SafeFileNames</b> Gets an array of file names and extensions for all the selected files in the dialog box. The file names do not include the path.
18	<b>ShowHelp</b> Gets or sets a value indicating whether the Help button is displayed in the file dialog box.
19	<b>ShowReadOnly</b> Gets or sets a value indicating whether the dialog box contains a read-only check box.
20	<b>SupportMultiDottedExtensions</b> Gets or sets whether the dialog box supports displaying and saving files that have multiple file name extensions.
21	<b>Title</b> Gets or sets the file dialog box title.
22	<b>ValidateNames</b> Gets or sets a value indicating whether the dialog box accepts only valid Win32 file names.

Design and Develop by Assistant Professor Ankit Rami

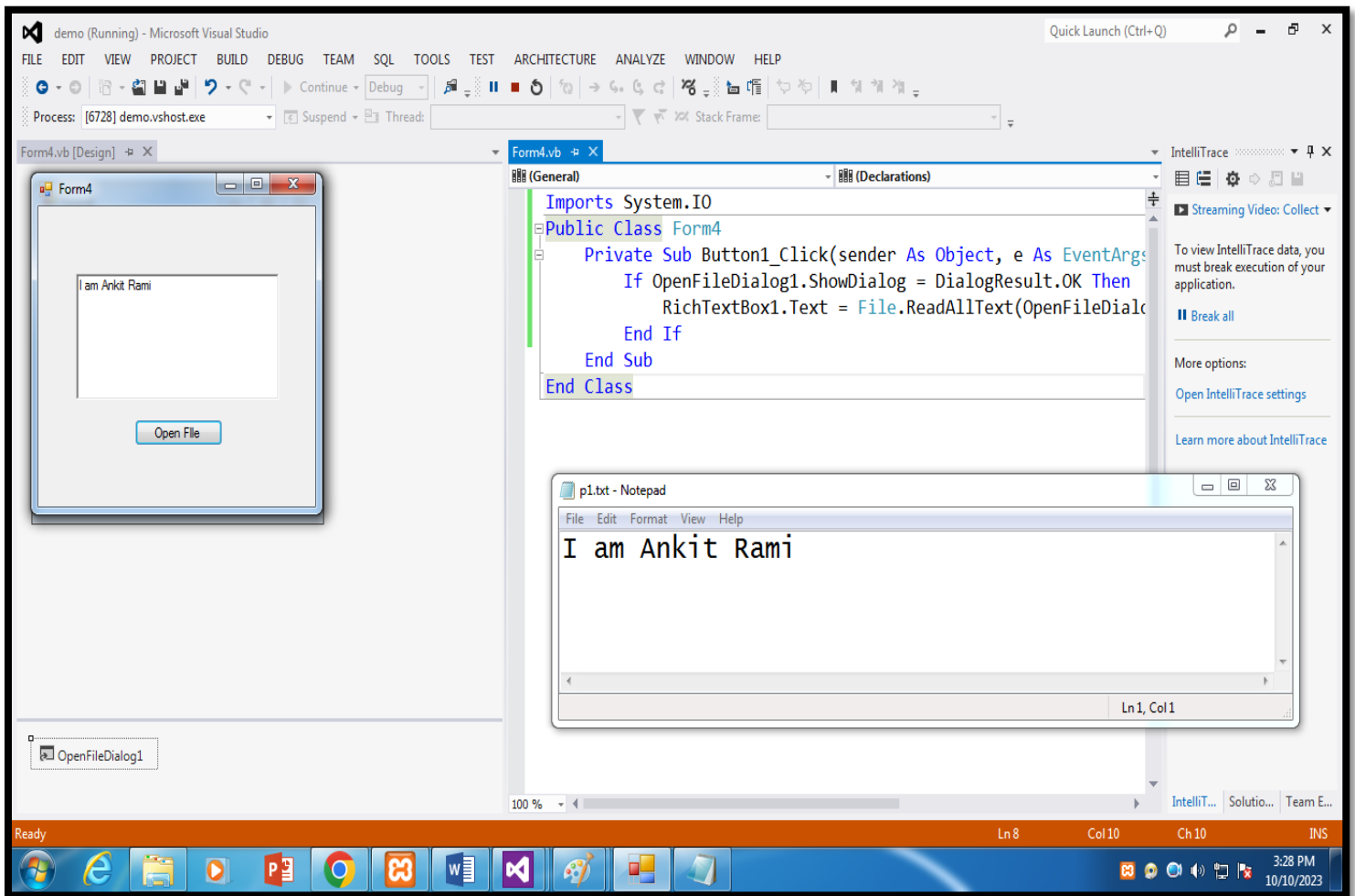
Any Query Contact - 8460467193



## Open File Dialog Methods in VB.net

Sr.No.	Method Name & Description
1	<b>OpenFile</b> Opens the file selected by the user, with read-only permission. The file is specified by the FileName property.
2	<b>Reset</b> Resets all options to their default value.

### Ex- Open File Dialog



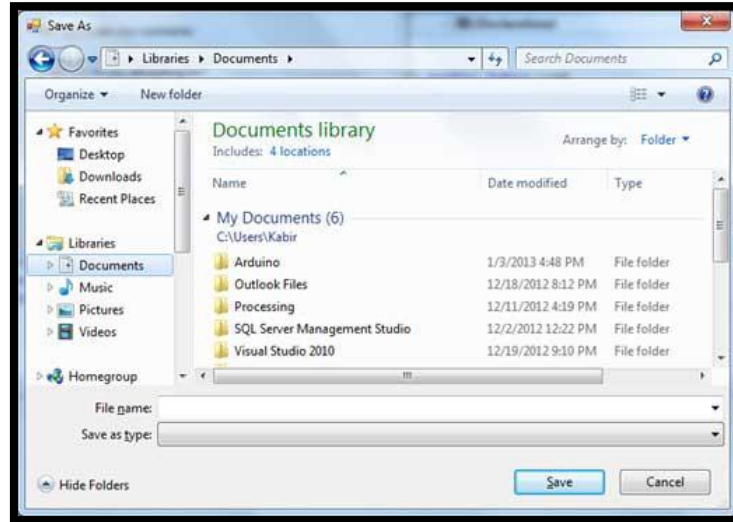
Design and Develop by Assistant Professor Ankit Rami

Any Query Contact - 8460467193



## Save File Dialog Box in VB.net

- The SaveFileDialog control prompts the user to select a location for saving a file and allows the user to specify the name of the file to save data. The SaveFileDialog control class inherits from the abstract class FileDialog.



## Save File Dialog Box Properties in VB.net

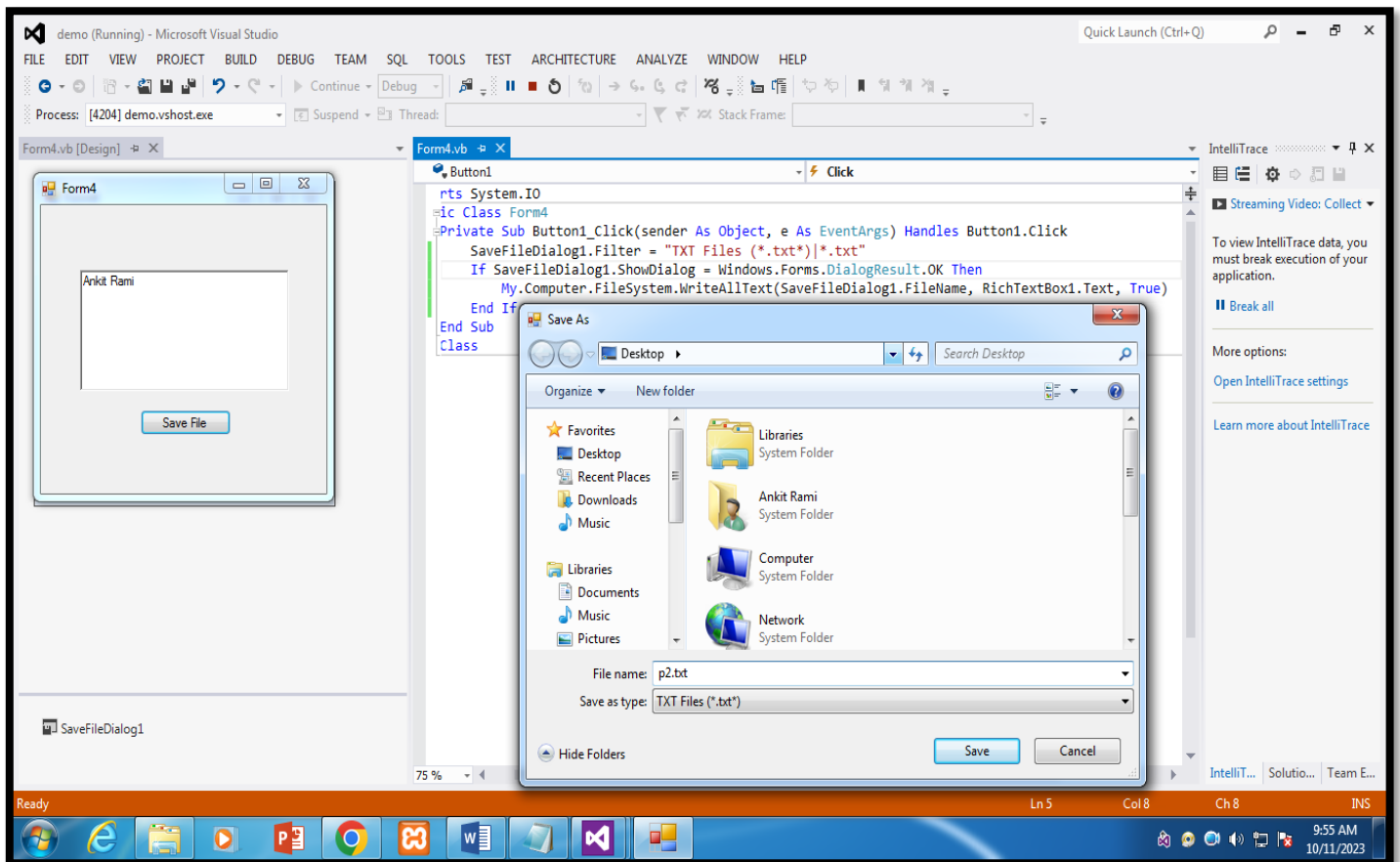
Sr.No.	Property & Description
1	<b>AddExtension</b> Gets or sets a value indicating whether the dialog box automatically adds an extension to a file name if the user omits the extension.
2	<b>CheckFileExists</b> Gets or sets a value indicating whether the dialog box displays a warning if the user specifies a file name that does not exist.
3	<b>CheckPathExists</b> Gets or sets a value indicating whether the dialog box displays a warning if the user specifies a path that does not exist.
4	<b>CreatePrompt</b> Gets or sets a value indicating whether the dialog box prompts the user for permission to create a file if the user specifies a file that does not exist.
5	<b>DefaultExt</b> Gets or sets the default file name extension.
6	<b>DereferenceLinks</b> Gets or sets a value indicating whether the dialog box returns the location of the file referenced by the shortcut or whether it returns the location of the shortcut (.lnk).
7	<b>FileName</b> Gets or sets a string containing the file name selected in the file dialog box.
8	<b>FileNames</b> Gets the file names of all selected files in the dialog box.
9	<b>Filter</b> Gets or sets the current file name filter string, which determines the choices that appear in the "Save as file type" or "Files of type" box in the dialog box.
10	<b>FilterIndex</b> Gets or sets the index of the filter currently selected in the file dialog box.
11	<b>InitialDirectory</b> Gets or sets the initial directory displayed by the file dialog box.
12	<b>OverwritePrompt</b> Gets or sets a value indicating whether the Save As dialog box displays a warning if the user specifies a file name that already exists.
13	<b>RestoreDirectory</b> Gets or sets a value indicating whether the dialog box restores the current directory before closing.
14	<b>ShowHelp</b> Gets or sets a value indicating whether the Help button is displayed in the file dialog box.
15	<b>SupportMultiDottedExtensions</b> Gets or sets whether the dialog box supports displaying and saving files that have multiple file name extensions.
16	<b>Title</b> Gets or sets the file dialog box title.
17	<b>ValidateNames</b> Gets or sets a value indicating whether the dialog box accepts only valid Win32 file names.



## Save File Dialog Box Methods in VB.net

Sr.No.	Method Name & Description
1	<b>OpenFile</b> Opens the file with read/write permission.
2	<b>Reset</b> Resets all dialog box options to their default values.

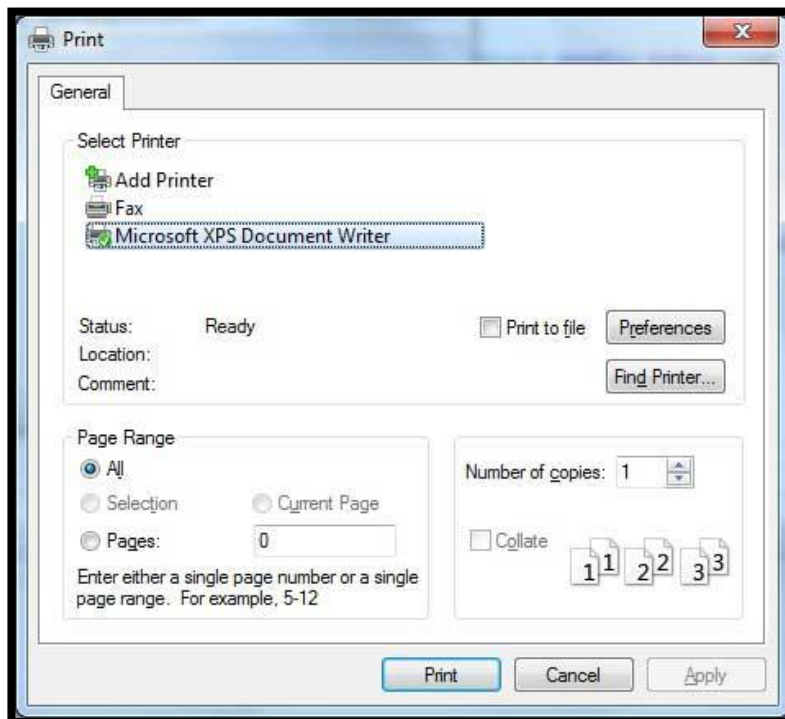
### Ex- Save File Dialog Box





## Print Dialog Box in VB.net

- The PrintDialog control lets the user to print documents by selecting a printer and choosing which sections of the document to print from a Windows Forms application.
- There are various other controls related to printing of documents. Let us have a brief look at these controls and their purpose. These other controls are Below
- **The PrintDocument control** – it provides support for actual events and operations of printing in Visual Basic and sets the properties for printing.
- **The PrinterSettings control** – it is used to configure how a document is printed by specifying the printer.
- **The PageSetupDialog control** – it allows the user to specify page-related print settings including page orientation, paper size and margin size.
- **The PrintPreviewControl control** – it represents the raw preview part of print previewing from a Windows Forms application, without any dialog boxes or buttons.
- **The PrintPreviewDialog control** – it represents a dialog box form that contains a PrintPreviewControl for printing from a Windows Forms application.





## Print Dialog Box Properties in VB.net

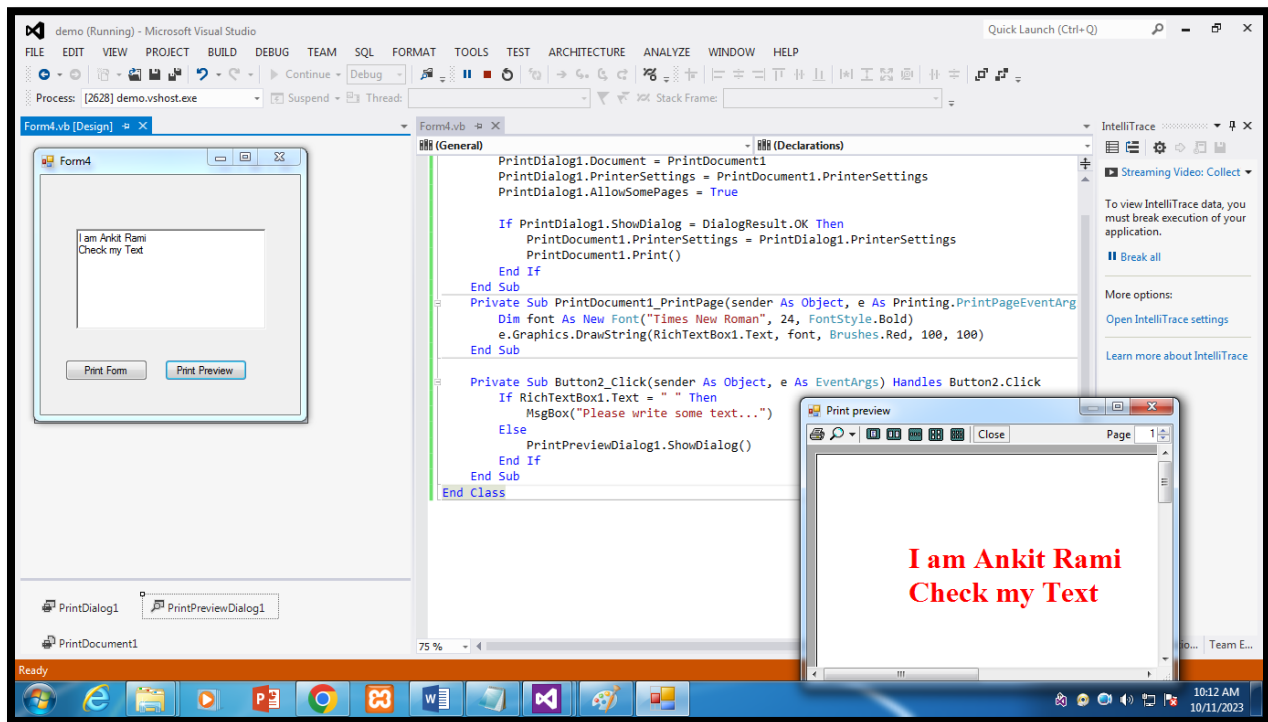
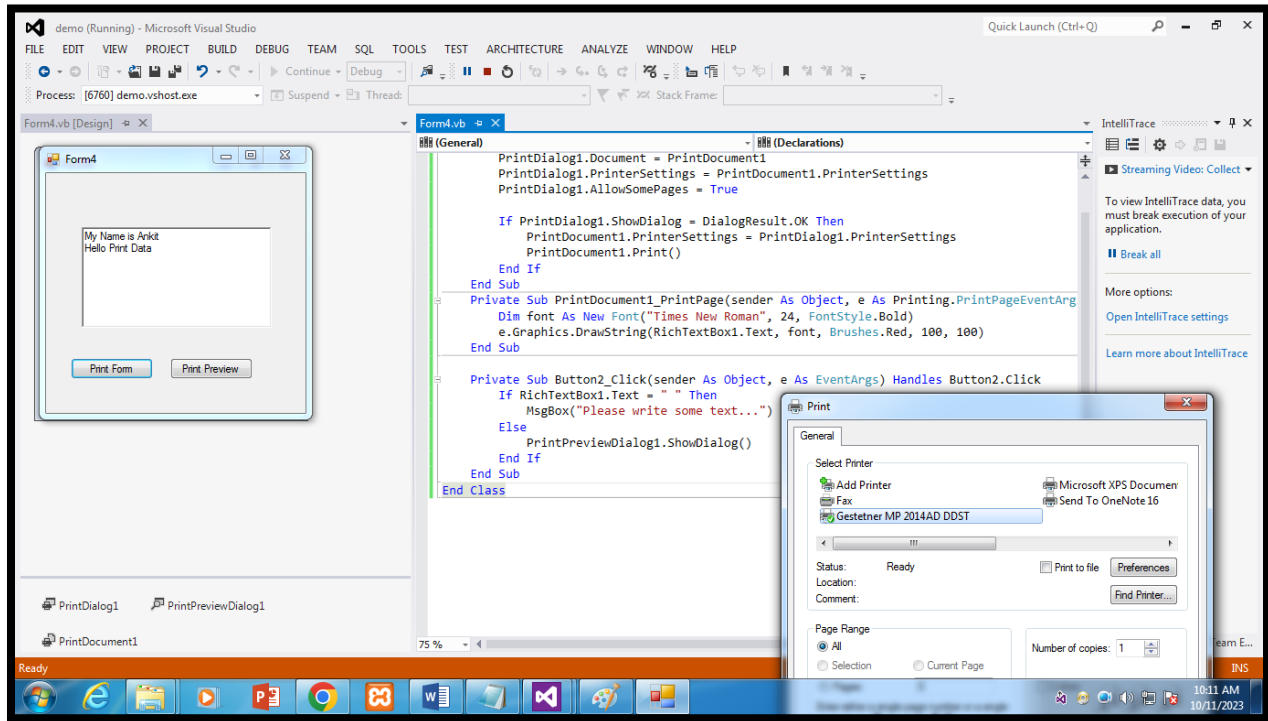
Sr.No.	Property & Description
1	<b>AllowCurrentPage</b> Gets or sets a value indicating whether the <b>Current Page</b> option button is displayed.
2	<b>AllowPrintToFile</b> Gets or sets a value indicating whether the <b>Print to file</b> check box is enabled.
3	<b>AllowSelection</b> Gets or sets a value indicating whether the <b>Selection</b> option button is enabled.
4	<b>AllowSomePages</b> Gets or sets a value indicating whether the <b>Pages</b> option button is enabled.
5	<b>Document</b> Gets or sets a value indicating the PrintDocument used to obtain PrinterSettings.
6	<b>PrinterSettings</b> Gets or sets the printer settings the dialog box modifies.
7	<b>PrintToFile</b> Gets or sets a value indicating whether the <b>Print to file</b> check box is selected.
8	<b>ShowHelp</b> Gets or sets a value indicating whether the <b>Help</b> button is displayed.
9	<b>ShowNetwork</b> Gets or sets a value indicating whether the <b>Network</b> button is displayed.

## Print Dialog Box Methods in VB.net

Sr.No.	Method Name & Description
1	<b>Reset</b> Resets all options to their default values.
2	<b>RunDialog</b> When overridden in a derived class, specifies a common dialog box.
3	<b>ShowDialog</b> Runs a common dialog box with a default owner.



## Ex- Print Dialog Box



**Design and Develop by Assistant Professor Ankit Rami**

**Any Query Contact - 8460467193**